



fiberon[®]

COMPOSITE CLADDING

FOR HIGH-PERFORMANCE
RAIN SCREEN SYSTEMS

WATER AND THE BUILDING ENVELOPE

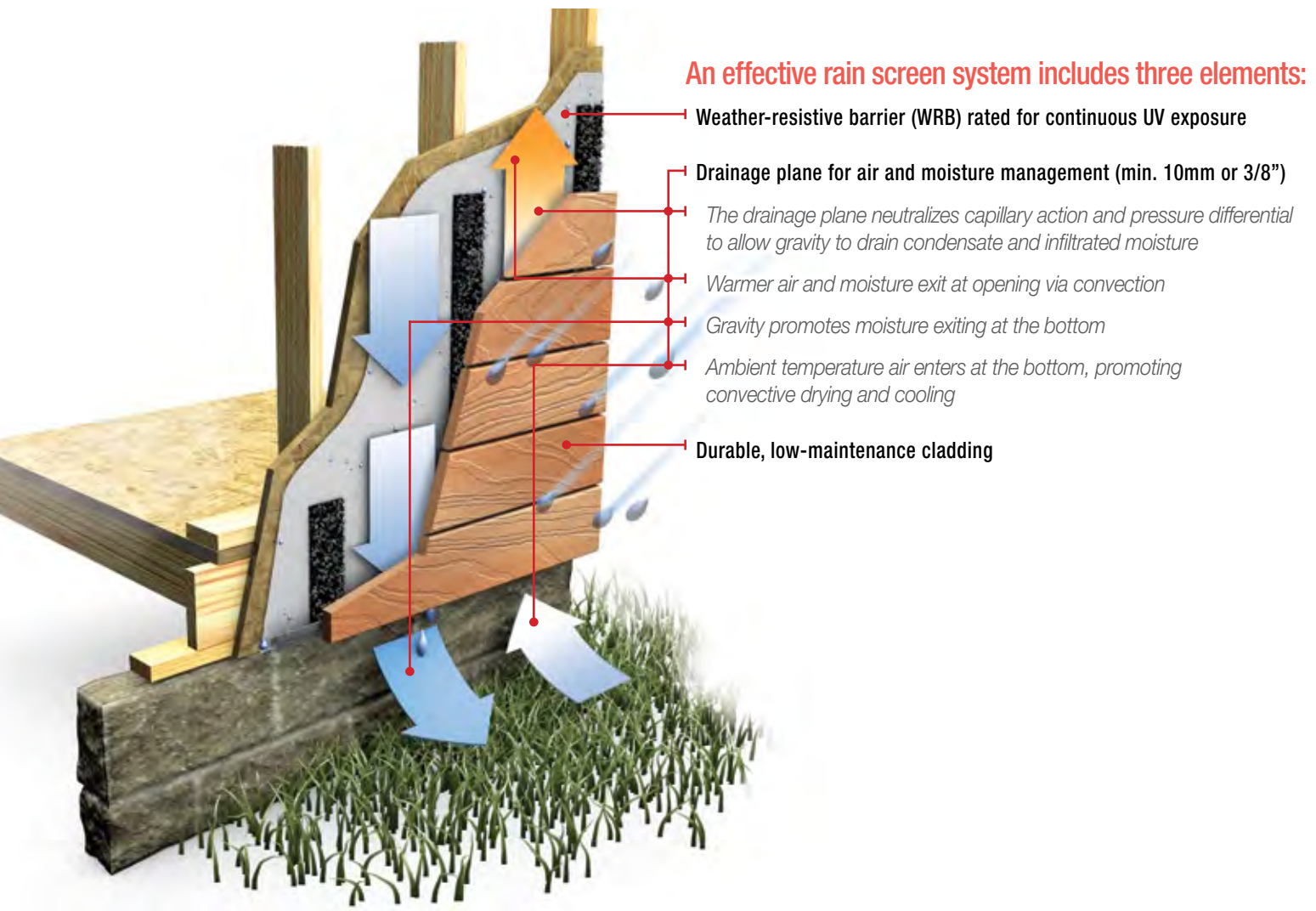
Today, the architect and contractor are challenged to incorporate more stringent building codes, heightened expectations of energy efficiency, and new, innovative materials and installation methodologies into every project. Heat, air, and moisture management are essential concerns. Water intrusion in the building envelope is a leading cause of callbacks, structural failure, and litigation. Hierarchically, it is of primary concern. Further, once moisture issues are mitigated, the challenges of heat and air management are also generally resolved.

HIGH-PERFORMANCE RAIN SCREEN SYSTEMS

The key to preventing moisture-related damage is to create walls that effectively manage bulk water infiltration, capillary water intrusion, and water vapor exfiltration. Designers must pay particular attention to the 4 D's:

- Deflection—keeping as much precipitation off the exterior wall enclosure as practically possible;
- Drainage—draining away any water that does strike and penetrate the cladding;
- Drying—providing sufficient ventilation to evaporate residual moisture, and arranging materials for gradual drying by diffusion; and
- Durability—selecting materials that can withstand periodic wetting without deterioration over the service life of the enclosure.

Proper material choice is critical. Rain screen systems are one of the most effective methods to manage moisture and mitigate its damage to residential and commercial structures.



FIBERON COMPOSITE CLADDING

AN IDEAL ALTERNATIVE



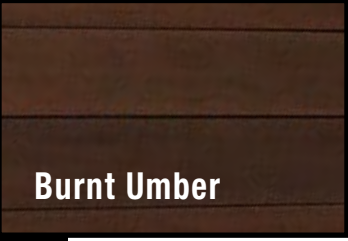
Exterior cladding provides aesthetic appeal as well as protection against the weather. Most common cladding options can fade, crack, or peel, and require costly maintenance. In addition, many cladding options can absorb water quite readily, which compounds moisture management challenges. Fiberon composite cladding absorbs negligible amounts of water and will not fade, crack, or peel. What's more, Fiberon cladding offers a range of exceptional benefits not found with wood, fiber cement, or other materials.

BEAUTIFUL

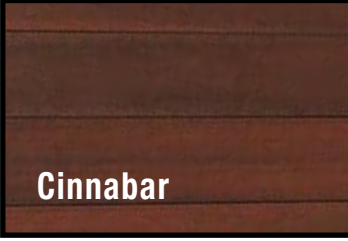
- Eight striking colors
- Embossed grain patterns
- Subtle or dramatic multi-tonal streaking
- Solid, square-edge profile (.935 in. x 5.4 in.)
- Works with horizontal or vertical applications

Fiberon Symmetry® Collection

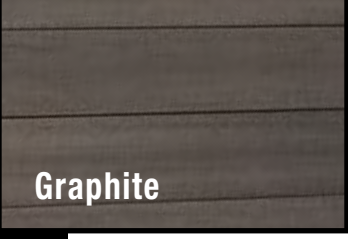
Matte finish with subtle streaking



Burnt Amber



Cinnabar



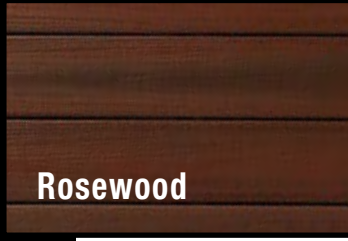
Graphite




Warm Sienna

Fiberon Horizon® Collection

Traditional finish with dramatic streaking



Rosewood



Tudor Brown



Castle Gray



Ipe

DURABLE

- Four-sided PermaTech® cap layer provides stain and fade resistance
- Wood-composite core prevents splintering, rotting, cracking, insect infestation, and decay
- Never needs sanding, staining, or sealing
- Easy maintenance means lower long-term costs of ownership

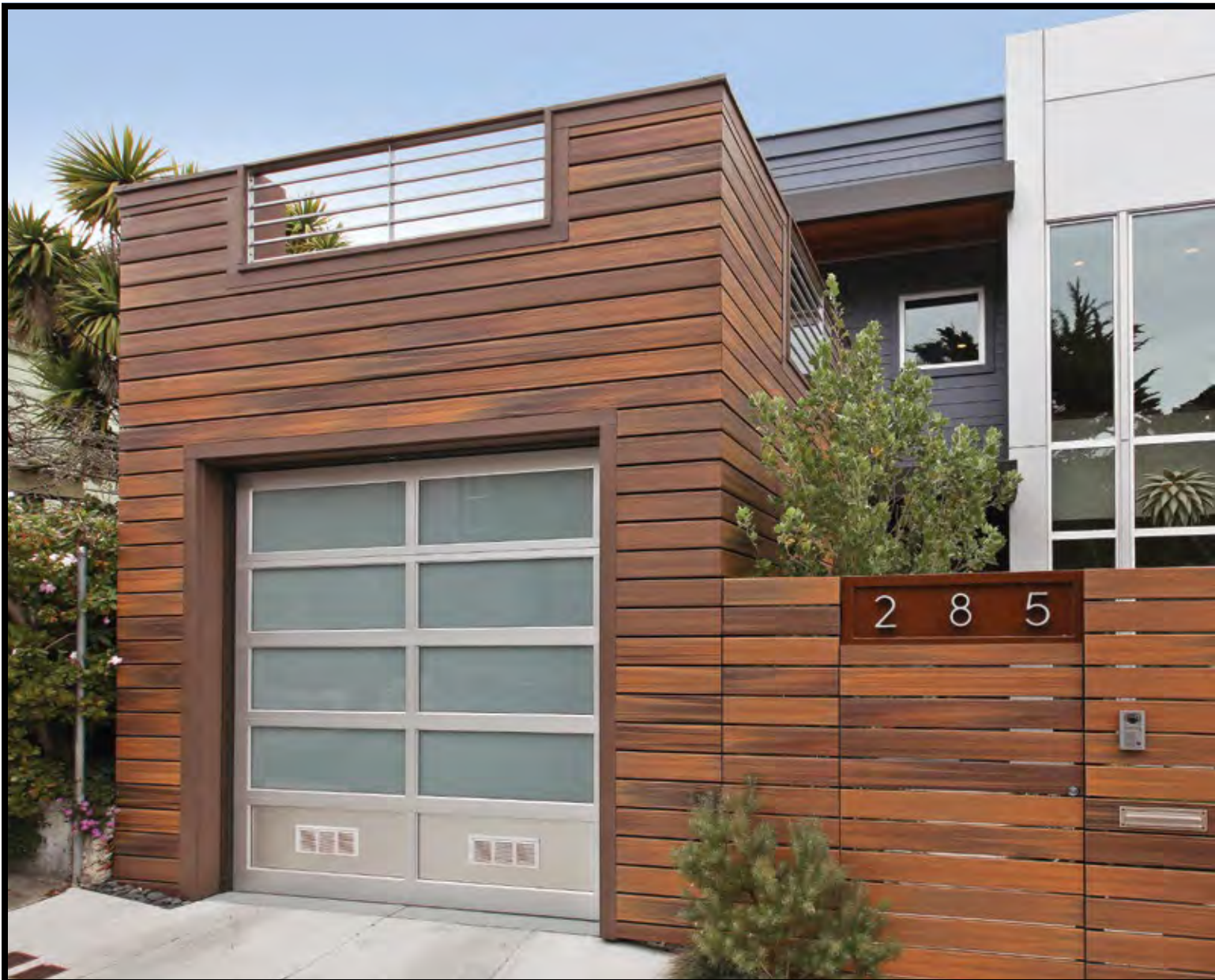
RELIABLE

- 25-year performance limited residential warranty
- 20-year finish limited residential warranty
 - 20 years cracking and delamination
 - 5 years fading; color change of 5 delta E
- 10 year performance and finish limited commercial warranty
 - 10 years cracking and delamination



PROVEN

- Performance Evaluation Report PER-17111
- Florida Product Approval Number #21959
- Meets Florida Building Code Test Protocols for High Velocity Hurricane Zone (HVHZ)
 - TAS 201-94 Large and small missile test standard (PASSED) Design Pressure +120.0 / -120 psf
 - TAS 202-94 Uniform structural load standard (PASSED) Design Pressure +120.0 / -120 psf
 - TAS 203-94 Uniform cyclic pressure test standard (PASSED) Design Pressure +120.0 / -120 psf
- Texas Department of Insurance Product Evaluation (TDI-MC18)
- NFPA 268 Standard Test Method for Determining Ignitability of Exterior Wall Assemblies Using a Radiant Heat Source (PASSED)





CONVENIENT

- Standard lengths: 12 ft., 16 ft., and 20 ft.
- Global availability
- Short lead times

GREEN

- Contains 94% pre- and post-consumer recycled content
- Manufactured using sustainable processes that recover 98.5% of material waste
- Utilizes bi-coastal manufacturing and rail transport (where feasible) to reduce greenhouse gas emissions
- Diverts 70,000+ tons of wood and plastics from landfills and incinerators annually

FIBERON COMPOSITE CLADDING OUTPERFORMS THE REST

	Fiberon Composite Cladding	Fiber Cement Siding	Wood Lap Siding	Stucco	Brick and Stone Masonry
APPEARANCE	<ul style="list-style-type: none"> ◦ Authentic wood grain and color variation. ◦ No fading, cracking, or decay. 	<ul style="list-style-type: none"> ◦ Painted. ◦ No multi-tonal streaking. ◦ Can fade. 	<ul style="list-style-type: none"> ◦ Color fades, chips, and can stain. ◦ Can develop mold and mildew stains. 	<ul style="list-style-type: none"> ◦ Prone to cracking. ◦ Limited trim options. 	<ul style="list-style-type: none"> ◦ Authentic look.
EASE OF INSTALLATION	<ul style="list-style-type: none"> ◦ Boards are prefinished; no extra steps required. ◦ Reduces labor time/expense. ◦ Install with composite material screws. ◦ Longer board lengths reduce splices and labor. ◦ Can be installed with workers on ladders instead of scaffolding. 	<ul style="list-style-type: none"> ◦ Difficult to cut. ◦ OSHA requires exposure controls and protective equipment. ◦ Can break under its own weight. ◦ Careful handling required. 	<ul style="list-style-type: none"> ◦ Requires multiple trades to install and finish. 	<ul style="list-style-type: none"> ◦ Labor intensive. ◦ Requires 2- to 3-step application plus paint. ◦ All layers must be uniform to perform well. ◦ Requires two layers/applications of building paper or wrap plus lath reinforcing. ◦ Heavy; scaffolding required when installing on second story or higher. 	<ul style="list-style-type: none"> ◦ Labor intensive. ◦ Requires wider foundation wall to support its own weight and accommodate code-required 1-inch air space. ◦ Heavy; scaffolding required when installing on second story or higher. ◦ Requires steel support lintels over windows, doors, and gable ends. ◦ Requires brick ties, thru-wall flashings, and weep holes for water drainage.
REQUIRES SPECIAL TOOLS OR TRADE-SPECIFIC LABOR	No	Yes	No	Yes	Yes
DURABILITY	<ul style="list-style-type: none"> ◦ Won't crack, splinter, peel, rot, decay, or suffer insect infestation. 	<ul style="list-style-type: none"> ◦ Brittle. ◦ Can fracture if nailed close to edge. ◦ Finish and face can spall off in cold environments. 	<ul style="list-style-type: none"> ◦ Splits and splinters. ◦ Prone to fading. ◦ Absorbs water. ◦ Can mold or rot. ◦ Prone to insect damage. 	<ul style="list-style-type: none"> ◦ Prone to cracking. 	<ul style="list-style-type: none"> ◦ Can spall when exposed to moisture.
WATER ABSORPTION	Negligible.	Depends on quality and age of finish.	Depends on quality and age of finish.	Yes, always.	Yes, always.
AFFECTED BY FREEZE-THAW CYCLES	No	Yes	Yes	Sometimes	Sometimes
WARRANTY	<ul style="list-style-type: none"> ◦ 10-year commercial ◦ 25-year residential 	<ul style="list-style-type: none"> ◦ Varies by manufacturer. ◦ Weathering/fading usually not covered. 	None	None	None
RECYCLED CONTENT	94%	None	None	None	None

PROFESSIONAL RESOURCES

Visit fiberoncladding.com for technical documents and other resources, including:

- Installation instructions
- Detailed drawings
- Architectural specification
- Case studies
- Care and maintenance

EARN AIA OR AAA CONTINUING EDUCATION CREDITS

Wood-Plastic (WPC) Composite Cladding for Sustainable Rain Screen Systems

Offered by AEC Daily, this free, CEU-eligible course analyzes moisture management issues, identifies the unique attributes of wood-plastic composites (WPC), and provides detailed installation and fastening information for WPC cladding in rainscreen systems.

Course qualifies for 1.0 LU/HSW Hour.



ABOUT FIBERON

Fiberon is a leading manufacturer of high-quality, low-maintenance, wood-alternative decking, railing, fencing, and cladding.

Manufactured in the United States, Fiberon products are available across North America and to more than two dozen countries in Europe, Asia, Australia, and Central and South America. An innovation leader with a focus on sustainability, Fiberon is privately owned and maintains operations in North Carolina and Idaho.



fiberondecking.com | 1.800.573.8841

Fiberon, Horizon, Permatech, and Symmetry are trademarks of Fiber Composites, LLC, registered in the U.S. and other countries.

Let's connect.



Made in the USA
MKT LIT BROCHURES RSN 2/19